



Trelleborg Sealing Profiles

Solutions that Seal, Damp and Protect

Innovation

you can count on

Experienced Innovators

Trelleborg has a reliable track record of finding innovative ways to seal damp and protect. Using advanced technologies and materials in new ways has always been our speciality. Working closely together with clients across almost every business sector, we have provided successful results for everything from small spliced seals to silicone window gaskets for North America's highest skyscraper.

Global and local

We have teams around the globe with expertise in specific sectors. But wherever they are, they are instantly available to you. Our network means you can find the talent, innovation and experience to customize solutions to your exact needs in your local market.

Together

When you partner with Trelleborg, all you need is a sealing problem. Our engineers will work closely with you to develop the exact specification for your individual situation. We can test the functionality already at the idea stage. To simulate performance and feasibility will give you the answers that save time and money in the development process.

Welcome to the world of Trelleborg!



Elastomers

or rubbers

Elastomers (rubber)

Elastomers are cross-linked (vulcanised) rubbers with rubber-elastic properties.

The properties of elastomers primarily result from the basic features of the cross-linked rubbers. By adding active fillers such as carbon dust and silicic acid, plasticisers, anti-aging agents, activators, processing agents, accelerators and cross-linking agents, the property profile of elastomers can be adapted to the relevant application.

In applications for windows, doors and facades, elastomers based on EPDM (ethylene propylene diene monomer) rubbers are used most frequently.

These materials are distinguished by very good elastic recovery and good resistance to environmental influences (ultraviolet and ozone degradation and diverse chemicals). EPDM can be used in temperatures ranging from -40 (short-term) to +150° C.

In particular, an attractive price-performance ratio makes these materials suitable for varied applications. Materials of hardness grades in the range from 50° to 90° Shore, foamed in different densities, as well as for highly diverse special applications (fire safety, special material compatibilities..) are available.



EPDM

The right choice of material is crucial for the application:

	EPDM standard compounds	EPDM fire safety compounds	EPDM bright compounds	EPDM cellular rubber compounds	Diverse special compounds
Shore hardness A	50 - 90° Shore	70° and 60° Shore	60° and 70° Shore	Density 0.5 - 0.7	60°, 70° and 80° Shore
Colours	black	black	sliver grey light grey pure white papyrus white	black	black
Special properties	standard qualities as per DIN 7863	for fire safety requirements etc. as per DIN 4102 as per DIN 5510	coloured alternative to the standard in black	closed-cell foamed EPDM optimised thermal conduction resistance	AGV-compatible (Plexiglas-compatible) qualities that can be cut for seal preliminary drawing-in with increased tear propagation resistance for corner circumferential use Degassing-reduced materials for use in solar collectors etc.
Preferred Application fields	windows, facades, doors, gates	rail vehicles fire safety elements	windows, doors and gates	extra thermally insulated window and facade systems, corner circumferential sealing systems	Glazing with synthetic glass solar collectors Contact areas with adhesive and sealing compounds of automated seal drawing-in

A material data sheet with the physical properties is available for each compound

Materials

Key to materials

Property \ Rating	Natural rubber/SBR					EPDM					Chloroprene					TPE					Silicone				
	1	2	3	4	5	1	2	3	4	5	1	2	3	4	5	1	2	3	4	5	1	2	3	4	5
Resistance to wear				•	•				•					•				•			•				
Compression set			•	•				•	•				•				•								•
Resistance to cold				•	•					•		•						•							•
Resistance to oxidation		•	•							•				•					•						•
Resistance to weather	•	•								•				•					•						•
Resistance to ozone	•	•								•				•					•						•
Resistance to fire	•					•	•							•		•					•				
Thermal ageing			•							•				•				•						•	
Resistance to oils and petrol	•					•							•			•					•				
Hardness °IRH	40–80					40–90					50–80					40–90					50–80				
Strength, max. MPa	20					10					15					5-10					7,5				
Max. temp. 6 v. °C	+ 70°C					+ 100°C					+ 90°C					+ 100°C					+ 200°C				
Resistance to cold °C	– 50°C					– 55°C					– 40°C					– 50°C					– 90°C				

Rating: 1 Poor 2 Reasonable 3 Good 4 Very good 5 Excellent

Some of the materials we use in the manufacture of sealing profiles are natural rubber/SBR, EPDM, Chloroprene, TPE, AEM, NBR, HNBR, NBR/PVC, ECO, FPM and Silicone.

In order to select the right material for each application we recommend that you start by looking at the basic properties of the

materials shown in the table.

There is a considerable number of ways to adapt the properties of the selected material to suit more specific requirements.

Table of tolerances

EPDM cellular rubber

Table of tolerances - cross section

Dim./mm	Class E1	Class E2	Class E3
	± mm	± mm	± mm
0 – 2.5	0.35	0.50	0.80
(2.5) – 4.0	0.40	0.70	1.00
(4.0) – 6.3	0.50	0.80	1.30
(6.3) – 10	0.70	1.00	1.60
(10) – 16	0.80	1.30	2.00
(16) – 25	1.00	1.60	2.50
(25) – 40	1.30	2.00	3.20
(40) – 63	1.60	2.50	4.00
(63) – 100	2.00	3.20	5.00

Standard ISO 3302-1, DIN 7715

Table of tolerances - cut length

Dim./mm	Class E1	Class E2	Class E3
	± mm	± mm	± mm
0 - 40	1.0	1.6	3.2
(40) – 63	1.3	2.0	4.0
(63) – 100	1.6	2.5	5.0
(100) – 160	2.0	3.2	6.3
(160) – 250	2.5	4.0	10.0
(250) – 400	3.2	5.0	12.5
(400) – 630	4.0	6.3	16.0
(630) – 1000	5.0	10.0	20.0
(1000) – 1600	6.3	12.5	25.0
(1600) – 2500	10.0	16.0	32.0
(2500) – 4000	12.5	20.0	40.0

Standard ISO 3302-1, DIN 7715

Table of tolerances

EPDM solid rubber

Table of tolerances - cross section

Dim./mm	Class E1	Class E2	Class E3
	± mm	± mm	± mm
0 – 1.5	0.15	0.25	0.40
(1.5) – 2.5	0.20	0.35	0.50
(2.5) – 4.0	0.25	0.40	0.70
(4.0) – 6.3	0.35	0.50	0.80
(6.3) – 10	0.40	0.70	1.00
(10) – 16	0.50	0.80	1.30
(16) – 25	0.70	1.00	1.60
(25) – 40	0.80	1.30	2.00
(40) – 63		1.60	2.50
(63) – 100		2.00	3.20

Standard ISO 3302-1, DIN 7715

Table of tolerances - cut length

Dim./mm	Class E1	Class E2	Class E3
	± mm	± mm	± mm
0 - 40	0.7	1.0	1.6
(40) – 63	0.8	1.3	2.0
(63) – 100	1.0	1.6	2.5
(100) – 160	1.3	2.0	3.2
(160) – 250	1.6	2.5	4.0
(250) – 400	2.0	3.2	5.0
(400) – 630	2.5	4.0	6.3
(630) – 1000	3.2	5.0	10.0
(1000) – 1600	4.0	6.3	12.5
(1600) – 2500	5.0	10.0	16.0
(2500) – 4000	6.3	12.5	20.0
4000 –	0.16%	0.32%	0.50%

Standard ISO 3302-1, DIN 7715

Crown strip

self-adhesive EPDM cellular rubber

Crown strip

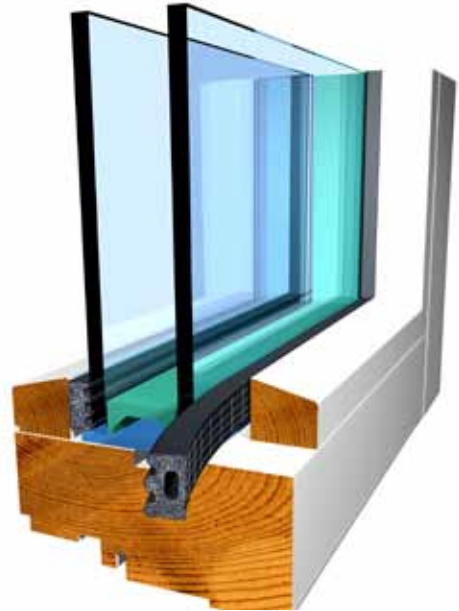
Consists of a complete range of sizes approved for use in a number of applications.

It may be used with or without a top seal in accordance with the regulations set out in MTK installation instructions. MTK approved articles * marked in the table.

- manufactured from EPDM cellular rubber with excellent resistance to cold, heat and ageing
- ridge profile gives multi-point seal
- closed cells and continuous skin
- soft and resilient – easy to fit
- fibre glass reinforced dual component tape

Crown strip is available in a number of sizes to suit various needs and applications

Approved products are listed at
www.MTK.se and www.SINTEFcertainment.no



Product no.	Width x Height mm	Length m on bobin	Colour	Bobins in box M/box	Boxes on pallet M/pallet
444191600	8 x 2	200	Black	1 200	33 600
444139500	8 x 3	150	Black	900	25 200
444112100*	8 x 4	125	Black	750	21 000
444126100	9 x 3	150	Black	900	25 200
44057255	9 x 3	100	White	600	9 600
444022405	9 x 3	2 x 50	Grey	600	9 600
44065556	9 x 4	100	White	600	9 600
444112200*	9 x 4	125	Black	750	21 000
444112300*	10 x 4	125	Black	750	21 000
444104700*	10 x 5	100	Black	600	16 800
44000060	15 x 4	100	Black	600	6 000
44000070	15 x 8	50	Black	300	3 000
44000080	20 x 4	50	Black	300	3 000

Product no.	Width x Height mm	Length m on bobin	Colour	Bobins in box M/box	Boxes on pallet M/pallet
44062530*	10 x 6	100	Black	400	6 400

Cellular strips

self-adhesive EPDM cellular rubber

Self-adhesive cellular strips

A strip with excellent sealing characteristics. Can be fitted around corners without joints or mitering. Easy to compress in order to give best possible seal. Good for soundproofing and anti-vibration purposes.

- manufactured from EPDM cellular rubber with excellent resistance to cold, heat and ageing
- closed cells and continuous skin
- soft and resilient – easy to fit
- fibre glass reinforced dual component tape

Cellular tape is available in a range of sizes to suit various needs and applications



Product no.	Width x Height mm	M/bobin	Colour	Bobins in box. M/box	Box on pallet. M/pallet
44061530	8 x 2	200	Black	1 200	19 200
44068010	8 x 2	200	White	1 200	19 200
44061421	10 x 2	200	Black	1 200	19 200

Glazing strip

dry glazing

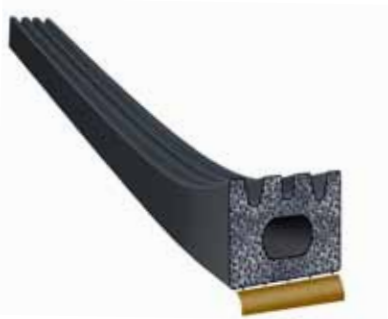
Glazing strip

- Bevelled sealing strip for reliable water run-off
- Wide groove fitting gives neat, straight installation
- Easy to replace double-glazing panel
- Dry glazing a tested, well-established glazing method
- Easy to handle as it can be fitted from one side
- Controlled compression gives reliable installation
- Quick and easy fitting
- To be combined with crown strip or cello strip



Product no.	Width x Height mm	Cord	Colour	Length m on bobin	Bobins in box M/box	Boxes on pallet M/pallet
46091825*	10,5 x 6	Yes	Black	200	200	2 400

* item not on stock, on request only. Minimum order quantity required.



Cello strip

Product no.	Width x Height mm	Colour	Length m on bobin	Bobins in box M/box	Boxes on pallet M/pallet
44062530	10 x 6	Black	100	400	6 400

Glazing strip

groove fitting

Glazing strip

Trelleborg Glazing strip is designed for factory glazing in machined grooves. The glazing strip is fitted with a cord that makes it particularly suitable for mechanical fitting, since the cord prevents the strip from stretching in its longitudinal direction. Manufactured from solid black EPDM rubber. For use in accordance with MTK fitting instructions.



Product no.	Width x Height	Colour	Groove dimensions mm			Surface treatment	Length m on bobin	Bobin in box M/box	Boxes on pallet M/pallet
			A	B	C				
46074161	13 x 3,8	Black	5	3	3,5	talc	350	-	7 000**
46074165	13 x 3,8	Black	5	3	3,5	talc	350	350	3 500
713159401*	13 x 3,8	Black/Grey	5	3	3,5	no	350	-	7 000**

* item not on stock, on request only. Minimum order quantity required.

**wellcontainer

Frame strip

EPDM dual component

Weatherstrip for windows

Trelleborg weather strips are designed for windows and doors with machine made grooves.

These strips represent a well tested and established solution for the glazing of windows and doors.

Manufactured from high quality EPDM rubber.



Product no.	Width x Height	Colour	Groove dimensions mm				Surface treatment	Length m on bobin	Bobin in box. Length m	Boxes on pallet. M/pallet
			A	B	C	D				
70091580	14,5 x 8	Grey	14,5	4-5	8	7	No	150	150	3 000

A groove height

B groove width

C sealing bead width

D sealing bead height

Frame strip

solid EPDM rubber

Frame strip of solid EPDM rubber for nailing

Nailing of sealing strips is one of the methods used in the production of timber windows and doors. In industrial production this is a good alternative to self-adhesive strips or groove fitted strips. The big size strips in this product range are used in a number of construction applications where wider gaps have to be covered.



Product no.	Width x Height mm	Gap size	Colour	Pack.	Length m/bobin	Boxes on pallet M/pallet
46063801	10 x 5,5	3-5	Black	Bobin in box	400	8 000
46063161	11,5 x 7,5	3-6,5	Black	Bobin in box	400	8 000

Product no.	Width x Height mm	Colour	Bundle length m	Bundles in box M/box	Boxes on pallet M/pallet
464065300	15 x 9	Black	100	600	2 400
46078810*	30 x 10	Black	100	200	800
46078800	40 x 20	Black	50	400	400

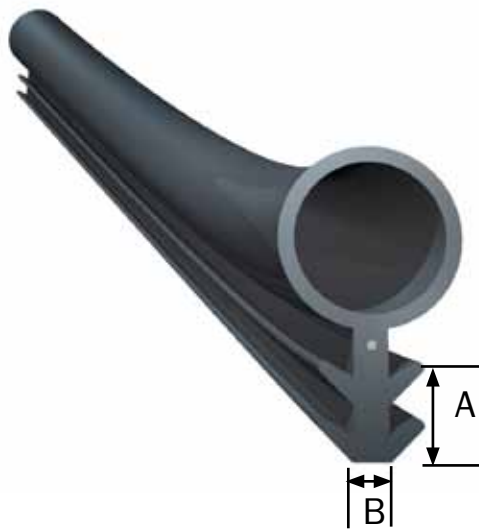
* item not on stock, on request only. Minimum order quantity required.

O strip

with wedge foot

Frame O strip for groove fitting

EPDM solid rubber strip for frame or casement.
Strip with cord recommended for mechanical fitting.



Product no.	Ø mm	A mm	B mm	Groove width	Cord	Colour	Bundle length m	Bundles in box M/box	Box on pallet M/pallet
46088580*	7	4,3	4,5	3,0-3,8	Yes	Black	150	300	7 200

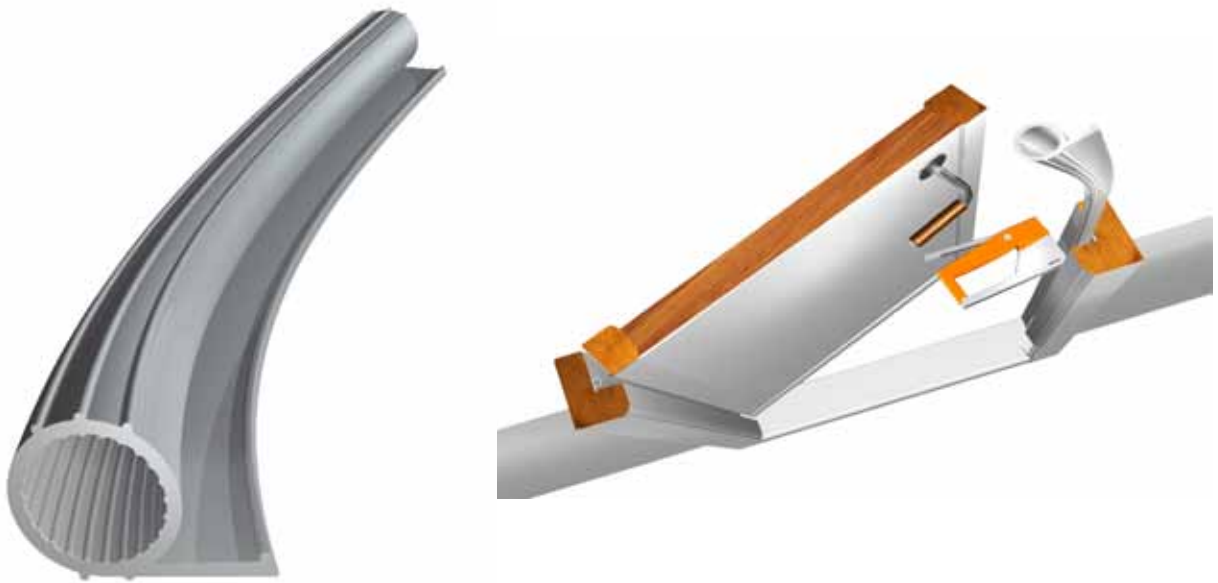
* item not on stock, on request only. Minimum order quantity required.

Sio strip

silicone rubber

Frame Sio strip

A silicone rubber strip for frame or casement. This strip is glued or nailed.



Product no.	Width x Height mm	Gap width	Colour	Length m on bobin	Bobins in box M/box	Boxes on pallet M/pallet
42059080	10,5 x 7,5	2-6	White	2 x 50	600	6 000

Frame strip Omega

silicone rubber

Self-adhesive frame strip

A silicone rubber strip for frame or casement.
Suitable in metal or steel constructions.

- Greater lifespan than EPDM
- Exceptionally resistant to chemicals and extreme temperatures
- Good UV resistance
- Can be over painted
- Temperature range -60 to +150 degrees Celsius (max 70°C for self-adhesive profiles)
- Offer the lowest resistance to closing



Product no.	Width x Height mm	Gap size	Colour	Length m on bobin	Bobin in box M/box	Boxes on pallet M/pallet
43307249*	9 x 7	up to 7 mm	White	2 x 200	400	8 000

* item not on stock, on request only. Minimum order quantity required.

Frame strips

self-adhesive

Frame strips

Self-adhesive frame and casement strips made of EPDM cellular rubber.
P strip, D strip and K strip



Product no.	Width x Height mm	Gap size	Colour	Length m on bobin	Bobins in box M/box	Boxes on pallet M/pallet
44056891	9,0 x 5,5	3-5	Brown	2 x 50	600	9 600
44056871	9,0 x 5,5	3-5	White	2 x 50	600	9 600
44062124	9,0 x 5,5	3-5	White	100	600	6 000
44056926	9,0 x 5,5	3-5	Black	100	600	6 000



Product no.	Width x Height mm	Gap size	Colour	Length m on bobin	Bobins in box M/box	Boxes on pallet M/pallet
444092200	8 x 6	3-5	Black	2 x 50	600	12 000
444093300	8 x 8	4-7	Black	2 x 50	600	4 800
44067710	12 x 8	4-7	Black	100	400	6 400
444057905	12 x 10	4-8,5	Black	75	300	4 800
44077450	14 x 12	5-10	Black	75	300	4 800
444076200	21 x 17	8-15	Black	50	50	3 200



Product no.	Width x Height mm	Gap size	Colour	Length m on bobin	Bobins in box M/box	Boxes on pallet M/pallet
44057012	9 x 4	2-3,5	Brown	2 x 50	600	9 600
44057032	9 x 4	2-3,5	White	2 x 50	600	9 600

Cellular strip

EPDM cellular rubber

Cellular strip

Designed for use as a base strip, the seal absorbs movements in joints and construction elements. The shape of the profile and the cellular construction provides an excellent seal even under slight compression. Made from EPDM cellular rubber with closed cells and continuous skin. EPDM with an exceptional resistance to ageing.

Applications

- Sill seal
- Wall plate seal
- Seal between wall or roof sections SIPS
- Soundproofing



Product no.	Width x Height mm	Colour	Bundel length m	Bundels in box. M/box	Box on pallet. M/pallet
484141200	30 x 5	Black	2 x 50	600	2 400

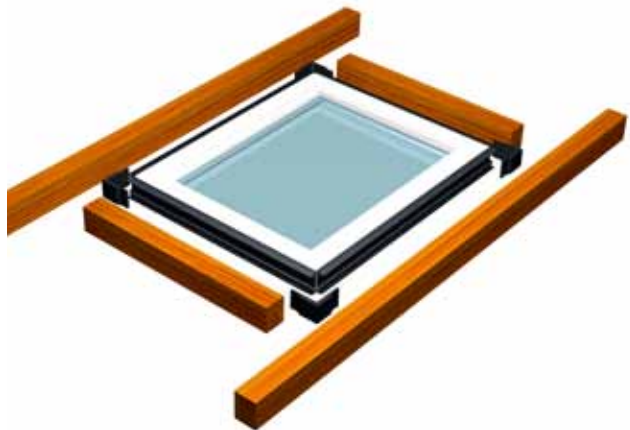
KT strip

with corner seal

KT strip

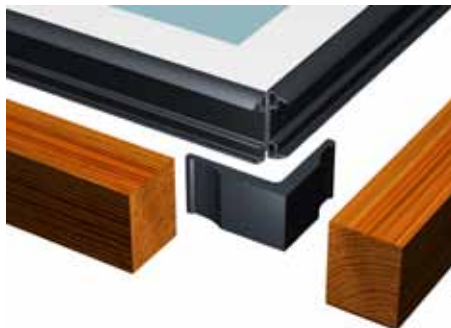
This strip is for prefabricated window sections only. The basic idea is a two-stage seal, i.e. rain-proofing on the outside and wind-proofing on the inside. The joint must also be thermally insulating, partly to reduce heat losses and partly to protect against condensation.

The strips shown here are made from a special caulking material that has been developed in collaboration with the building industry. Manufactured from black EPDM cellular rubber.



KT strip

Product no.	Dimension mm	Bundle length m	Bundles in box M/box	Boxes on pallet M/pallet
484146400	60 x 17	50	150	1 200
484196501	60 x 20	50	150	400
484116000	70 x 12	50	150	800



Corner seal for KT strip

Product no.	Dimension mm	Width & Height mm	Pack.	Pcs/box
484150001*	60 x 17	50 x 10	Box	200
484150000	60 x 20	50 x 10	Box	200
484115100	70 x 12	45 x 8	Box	300

* item not on stock, on request only. Minimum order quantity required.

D2 strip

EPDM cellular rubber

D2 strip

This seal is a wind and vapour barrier that is fitted between the window frame and the wall. Fitting is done from inside, providing an excellent seal and eliminating condensation.

The material, black EPDM cellular rubber with closed cells and continuous skin, remains resilient down to -40°C which makes it easy to fit. It accommodates any movement in the joint and will provide a perfect seal for many decades.



Product no.	Dimension mm	Joint width mm	Colour	Pack. qty. m	Bundels in box. M/box	Box on pallet. M/pallet
48060280	13 x 13	7-13	Black	50	500	2 000
48060290	21 x 21	10-18	Black	50	250	1 000
48063380*	30 x 30	16-27	Black	25	150	600

* item not on stock, on request only. Minimum order quantity required.

Floor & frame seal

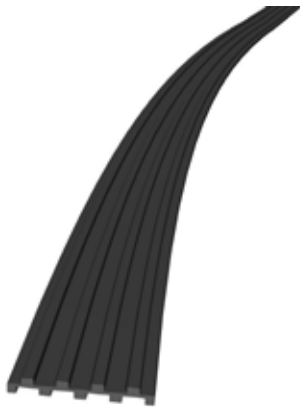
EPDM rubber

Soundproofing floor and frame seal

The seal absorbs movements in joints and construction elements. Considerably reduces troublesome noise that is often generated and transmitted through floors and ceilings (timber/timber, concrete/timber, concrete/concrete).

Should be fitted without pins or nails. May be glued if necessary.

Made from high quality EPDM rubber, solid or cellular rubber with closed cells and continuous skin. EPDM with an exceptional resistance to ageing.



Product no.	Dimensions mm	Type	Bundle length m	Bundle in box M/box	Boxes on pallet M/pallet
464084600	50 x 5	solid	50	200	4 800



Product no.	Dimensions mm	Type	Bundle length m	Bundle in box M/box	Boxes on pallet M/pallet
484133900*	45 x 10	cellular	50	150	600

* item not on stock, on request only. Minimum order quantity required.

ST strip

sill sealing strip

ST strip

Sealing with rubber strips offers numerous benefits. They seal out moisture, cold, wind and noise. Thanks to the closed cell structure they also provide good thermal insulation and they are water resistant. These sealing strips have good resistance to settling and excellent ageing resistance. The number of tubes, the placement on the film or the width of the film can be adjusted to suit your needs. You can have up to four tubes per strip and the tubes can be 10 mm or 20 mm in diameter, for more information contact us.

Fitting the ST strip

The strip is fitted with the vapour barrier upwards. This simplifies the fitting and adjustment of wall sections as the foil has a low friction coefficient.

Rubber strips can be individually positioned on vapour barrier to suit dimensions of wall studs. Vapour barrier widths up to 500 mm provide a barrier to moisture under the full thickness of the wall and allow overlapping with plastic floor barrier.

Recommended when erecting pre-assembled modular wall or roof sections and SIPs.



Product no.	Width x Height mm	Diameter tube mm	Colour	Bundle length m	Bundles in box M/box	Boxes on pallet M/pallet
484157908	100 x 10	10	Black / transp.	25	250	2 000
484157915*	500 x 10	10	Black / transp.	25	100	800
484157902	60 x 10	10	Black / transp.	25	400	3 200

* item not on stock, on request only. Minimum order quantity required.

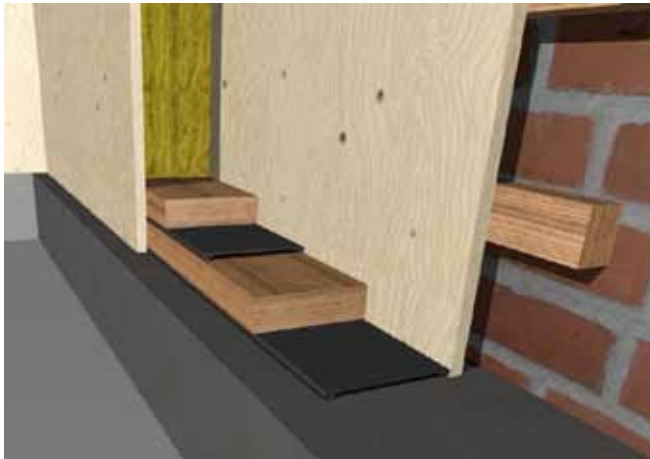


Sill seal

EPDM cellular rubber

Sill seal

The sill seal absorbs movements in joints and construction elements also over time. This seal provides weather proofing and thermal insulation. The shape of the profile and the cellular construction provides an excellent seal even under slight compression. Excellent on rough surfaces. Superior to material such as corrugated paper, mineral wool or glass wool.



Applications

- Sill seal
- Wall plate seal
- Seal between wall or roof sections SIPS
- Soundproofing
- Diffusion tight



Product no.	Width x Height mm	Bundle length m	Bundles in box M/box	Box on pallet. M/pallet
48053840	35 x 10	50	400	1 600
48055800	45 x 10	50	300	1 200
48053970	60 x 10	50	400	1 600
48055810	70 x 10	50	250	1 000
48053980	80 x 10	50	250	1 000
48055820	95 x 10	25	200	800
48053990	110 x 10	25	200	800
48054000	120 x 10	25	150	600
48059560	140 x 10	25	150	600
48060630	165 x 10	25	150	600

O strip

cellular EPDM rubber

O strip with fixing leg

Strip made of cellular EPDM rubber suitable for wall elements. This strip is fixed by nailing or stapled.



Product no.	Width x Length mm	Bundle length m	Bundles in box M/box	Boxes on pallet M/pallet
48058810	20 x 12	2 x 50	500	2 000
48056820	27 x 17	50	250	1 000
48060920	40 x 25	25	125	500
48058760	55 x 35	20	80	320
48059300	70 x 50	20	140	140*

*wellcontainer

Thresholds

solid rubber

Thresholds and scraper strip

Thresholds and scraper strips are made from grey, hard-wearing rubber.

Rubber threshold



Product no.	Width x Height mm	Bundle length m	Colour	Bundles on pallet M/pallet
46053730	70 x 9	25	Grey	400

Rubber threshold

with locating groove

Product no.	Width x Height mm	Bundle length m	Colour	Bundles on pallet M/pallet
46053740	70 x 9	25	Grey	400

Sprung rubber thresholds

Used primarily underneath interior doors to shut out dust and noise. Also permits a smooth passing.



Product no.	Width x Height mm	Bundle length m	Colour	Bundles in box M/box
46055410	76 x 13	20	Grey	320

Scraper strip

dual component with hard backing.
Replaces fixing rail.

Product no.	Width x Height mm	Bundle length m	Colour	Bundles on pallet M/pallet
70075070	13 x 14	50	Grey	800

Damper gasket

damper valve gasket

Damper valve gasket

This gasket is made from high quality black EPDM rubber.

A dual component gasket with antifriction treatment.

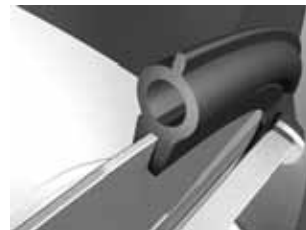
Solid rubber in the fitting part combined with cellular rubber that handles the sealing function and also seals effectively on uneven surfaces.

Our unique anti friction treatment reduces the torque needed.

Easy fit is already thought of in the design.

Manufactured with a technique that prevents hardened joints that could cause leakage.

Product no.	Pipe Ø mm	Length mm	Tolerance on length	Pallet qty.	Box qty.
71304518	100	270	± 3,2	10400	1300
71304501	120	325	± 3,2	9200	1150
71304519	125	340	± 3,2	8800	1100
71304502	140	370	± 3,2	8000	1000
71304503	150	400	± 3,2	7600	950
71304504	160	425	± 4,0	7200	900
71304505	180	485	± 4,0	6400	800
71304506	200	540	± 4,0	5600	700
71304507	220	615	± 4,0	4800	600
71304508	250	690	± 5,0	4400	550
71304509	280	780	± 5,0	4000	500
71305310	300	835	± 5,0	3600	450
71305311	315	880	± 5,0	3600	450
71305312	350	995	± 5,0	2800	350
71304520	355	1010	± 6,3	2800	350
71305313	400	1125	± 6,3	2800	350
71305314	450	1275	± 6,3	2400	300
71305315	500	1420	± 6,3	4000	250
71305316	560	1595	± 6,3	4000	250
71305317	630	1795	± 10,0	1600	200



Ventiseal T-type

T-shaped ventilation gasket

Ventiseal T-type

This gasket made from high quality black EPDM rubber is spliced to form rings. A gasket for sealing the joint of ventilation tubes.

A dual component gasket with antifriction treatment.



Dual component

Product no.	Pipe Ø mm	Length mm	Toleran- ce on length	Pack.	Pack. qty.
713170701	80	206	± 2,5	Box	1000
713170702	100	263	± 3,2	Box	1000
713170703	125	334	± 3,2	Box	1000
713170704	160	432	± 4,0	Box	800
713170705	200	515	± 4,0	Box	750
713170706	250	649	± 5,0	Box	750
713170707	315	822	± 5,0	Box	500
713170708	400	1041	± 6,3	Box	500
713170709	500	1295	± 6,3	Box	250

Ventiseal F-type

F-shaped ventilation gasket

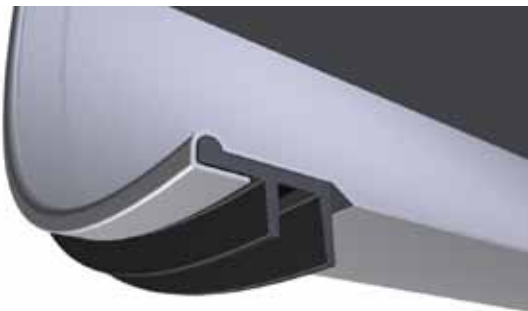
Ventiseal F-type

A gasket with two lips that is made from high quality solid EPDM. This gasket is also suitable for automated fitting. This F-shape gasket protects the installer from sharp edges and also aids the automated process.

The gasket is also produced with anti-friction treatment for ease installation.



Product no.	Pipe Ø mm	Length mm	Tolerance on length	Pack.	Pack. qty.
413124304	80	231	± 2,0	Box	2000
413124301	100	289	± 2,5	Box	1800
413124303	125	352	± 2,5	Box	1500
413124305	140	395	± 3,2	Box	1400
413214306	150	428	± 3,2	Box	1300
413124307	160	462	± 4,0	Box	1200
413124308	180	523	± 4,0	Box	1000
413123504	200	578	± 4,0	Box	750
413123506	250	707	± 5,0	Box	600
413123507	280	791	± 5,0	Box	500
413123508	315	890	± 6,3	Box	600
413123509	355	1030	± 6,3	Box	500
413123510	400	1130	± 6,3	Box	500
413131708	450	1295	± 6,3	Box	500
413131709	500	1440	± 6,3	Box	500
413131718	630	1793	± 6,3	Box	250



Cellular cords

EPDM cellular rubber

Multiple purpose cellular cords

A cord with excellent sealing characteristics. Easy to compress in order to give best possible seal. Good for soundproofing and anti-vibration purposes.

- excellent resistance to cold, heat and ageing
- closed cells and continuous skin
- soft and resilient – easy to fit
- low water absorption



Cellular cords are available in a range of sizes to suit various needs and applications

Product no.	Cord dimension mm	Bundle length m	Colour	Bundles in box M/box	Boxes on pallet M/pallet
484077200*	3	100	Black	1000	36 000
484054500	4	100	Black	1000	16 000
48000051	5	100	Black	800	8 000
484054501*	6	100	Black	900	21 600
48000081	8	100	Black	400	4 000
48000101	10	100	Black	200	2 000
484056200*	12	100	Black	200	4 800

* item not on stock, on request only. Minimum order quantity required.

Product no.	Square dimensions width x height mm	Bundle length m	Colour	Bundles in box M/box	Boxes on pallet M/pallet
48015151	15 x 15	100	Black	100	1 000

Product no.	Hose dimension mm	Hole dim. mm	Bundle length m	Colour	Bundles in box M/box	Boxes on pallet M/pallet
48053300	13	8	40	Black	400	1 600
48053310*	18	11	40	Black	240	960
48053320*	25	18	20	Black	160	640
48053330*	35	28	20	Black	60	240

* item not on stock, on request only. Minimum order quantity required.



Fenders

solid EPDM rubber

Protective fenders

Multipurpose fenders suitable for e.g. protecting boats, trucks and loading ramps.



Product no.	Width x Height mm	Length m	Colour	No. of lengths on pallet
46079030	60 x 50	4	Black	15
46079020	120 x 95	4	Black	20

Cable bridge

solid EPDM rubber

Cable bridge

Cable and hose protection also suitable as speed bump. Made from weatherproof solid EPDM rubber.



Product no.	Width x Height mm	Bundle length m	Inner Ø mm	Colour	Bundels on pallet M/pallet
41303820	200 x 48	4	30	Black	20

Tarpaulin ties

multipurpose product

Tarpaulin ties

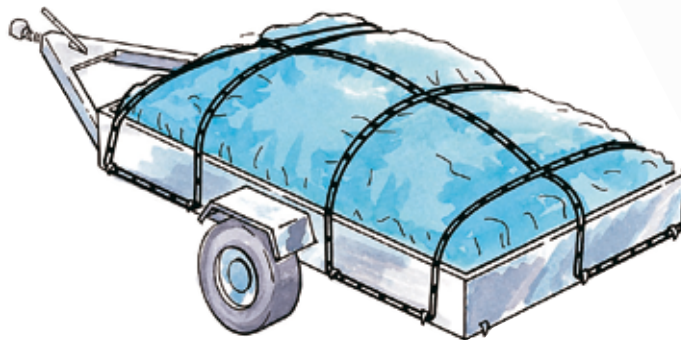
Multipurpose product made of natural rubber.

Material properties

Polymer type:	Natural rubber/SBR
Hardness:	50° IRH
Density:	1,15g/cm ³
Rupture strength:	12,1 Mpa
Elongation at failure:	510%
Tear strength:	97N/2,5 mm
Elongation at 2,5 MPa:	190%

Tensile test

Failure load:	460 N
---------------	-------



Product no.	Bundle length m	Colour	Bundles in box. M/box	Boxes on pallet. M/pallet
464504400	10	Black	10	1 440
464504401*	50	Black	150	3 000

* item not on stock, on request only. Minimum order quantity required.

seal damp protect



Find your contact at

www.trelleborg.com/sealingprofiles

